



EMPOWERING STUDENTS TO ACHIEVE



Communities
In Schools

Wayne County

Annual Report 2015-2016

THANK YOU!



The past year can best be summarized as a year of transition. Our founding Executive Director Vivian Ashmawi moved to a position at CIS Indiana. Becky Murray was promoted to Executive Director in April 2016 and has done a superb job transitioning into her new role. Of particular importance was the approval for a board seat to go to each Superintendent of every school district currently being served by CIS. Lastly, CIS Wayne County has achieved a level of financial stability not seen in years. This has been made possible by contributions from our valued donor base within our communities.

With all of these changes, we continued to serve our students through dedicated CIS Site Coordinators. Family drug abuse, hunger, poverty, clothing and shoe needs, medical, dental and eye care needs are some of the daily issues our students face that Site Coordinators help solve. Our success is derived by the love and compassion of this dedicated team of professionals. These people are my Wayne County heroes. The need for our services will continue to increase as budgets to support these services continues to decrease.

I look forward to my second year as Board Chair and working with the dedicated team of Site Coordinators, Administrative Staff, and Board Members. Together we will move CIS Wayne County to the next level.

Mark Soukup

2015-2016 Board President

MISSION

The Mission of Communities in Schools is to surround students with a community of support, empowering them to stay in school and achieve in life. All of Communities In Schools' work is guided by the "Five Basics"—a set of essentials that every child needs and deserves:

- A one-on-one relationship with a caring adult
- A safe place to learn and grow
- A healthy start and a healthy future
- A marketable skill to use upon graduation
- A chance to give back to peers and community

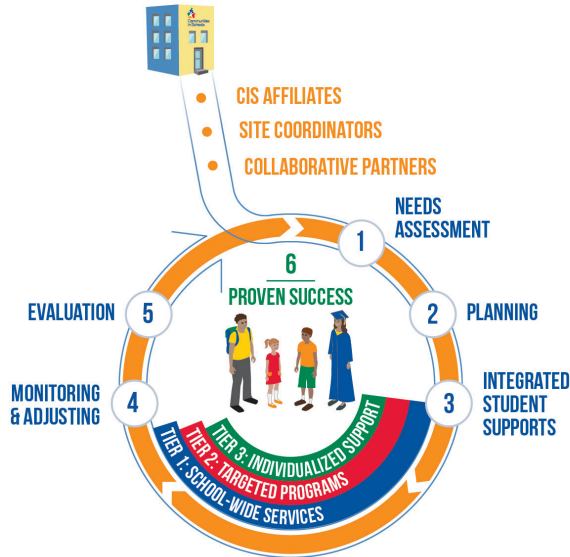
Communities In Schools is the only dropout prevention organization proven to both lower dropout rates and increase graduation rates. What sets Communities In Schools apart is our holistic approach to address both the academic and nonacademic needs of students. Working with school staff, Communities in Schools site coordinators, who are positioned in schools—identifying students in danger of dropping out, assess what resources they need, and then provide those resources through appropriate community partnerships. These resources include food clothing, transportation, housing, medical care, mentoring, and much more.

Communities In Schools Wayne County
33 South 7th Street, Richmond, IN 47374
Phone: 765-983-2263 Fax: 765-939-0508
www.ciswayneco.org

OUR UNIQUE MODEL



Communities
In Schools



© Communities In Schools 2016

• CIS AFFILIATES

Hires and trains site coordinators, brings the CIS model to schools in need and mobilizes partners to provide resources.

• SITE COORDINATORS

A trained professional who works with school administrators to assess needs, develop a plan and build a team to provide supports to schools and students.

• COLLABORATIVE PARTNERS

Schools, businesses and community agencies all work together with site coordinators to deliver supports to students and families.

1 NEEDS ASSESSMENT

Analyze multiple sources of data to identify the key needs of the school and individual students.

2 PLANNING

Site coordinators lead their school support team to develop a plan to prioritize supports that address academic and non-academic needs.

3 INTEGRATED STUDENT SUPPORTS

Site coordinator and partners deliver tiers of support to the school, students and their families.



4 MONITORING & ADJUSTING

Site coordinator continuously monitors student and school progress and adjusts supports to optimize results.

5 EVALUATION

Continuous assessment of partners and student supports by the CIS affiliate to demonstrate results and improve practice.

6 PROVEN SUCCESS

We increase graduation, reduce dropout, and improve attendance for schools in need.

TIER I

Tier I services are widely available and designed to foster a positive school climate and address school-level risk factors. Some examples of Tier I services that CIS Wayne County provides are:

- Reality store
- Tools for Schools supply drive
- Backpack Blessing
- Gleaners Backpack Program
- Mobile Dentist
- Clothing Closet
- Food Bank

“There is a family with 2 daughters who both attend Dennis Intermediate School. Mandy is in 5th grade and Katie in 7th. Early in the school year, these two girls were constantly in the nurse’s office getting checked for lice. Mandy let it slip that they ‘had no lights’ so it was hard for mom to see and check their heads. The School Resource Officer and I did a home visit, and I let the father know that there were many resources Communities In Schools could provide. Once the family was made aware of the resources, they took full advantage. Today, both parents have jobs, the lights are back on, and the girls are lice free. The girls are now able to dedicate much more of their time and attention to their education.”

-Leigh’Andra Moore,
Dennis Intermediate School Site Coordinator

OUR IMPACT



of monitored students receiving targeted interventions remained in school at the end of the 2015-2016 school year



of students in K-11 were promoted to the next grade



of eligible seniors graduated



case managed students experienced homelessness



showed progress or met their attendance improvement goals



case managed students have a parent who is incarcerated



showed progress or met their behavior improvement goals



showed progress or met their academic improvement goals



was the annual cost per student served



CIS local affiliates operated in 25 states and the District of Columbia



Site Coordinators Melissa Todd and Stephanie Gropp work with Northeastern students at the Reality Store. The Reality Store is an event designed to help students understand the cost of living in the U.S. By understanding the cost of living, students are more motivated to prepare for college and the workforce.

TIER II

Tier II services are targeted services which are typically provided in a group setting to case-managed students with a common need. Some examples of Tier II services that CIS Wayne County facilitates are:

- After school tutoring programs
- Homework Groups
- Social Skills Groups
- Lunch Groups

“Our school-wide character word for April was friendship. Some 3rd grade girls were having trouble navigating friendships within their classroom. Their teacher asked if I would speak to them about this issue. I brought the girls into my office one at a time and then met with them as a group to mediate the situation. We played out different scenarios and found solutions. Each girl came to the realization that ‘girl drama’ could be handled differently if they would simply come together and practice positive coping skills. Students sometimes feel more comfortable opening up about personal situations with a site coordinator than a teacher. I am a support they can utilize to help them walk through any conflicts or situations that arise.”

-Maricela Lindahl,
Charles Elementary School Site Coordinator

OUR IMPACT



18

school sites partnered with Communities In Schools of Wayne County



220

students and their families were referred to community partners



60%

of students were eligible for free or reduced-price lunch



712

students received targeted case-management services



\$39,870

worth of volunteer time was accrued



21,346 HOURS

of service provided by community partners



235

community volunteers donated their time



1,706

parents, families and guardians participated in their children's education through opportunities provided by CIS of Wayne County



78

community partner organizations benefited at-risk students



19

nonprofit and youth development professionals carried out the Communities In Schools mission



CIS Wayne County hosted a 'graduation celebration' for graduating seniors in Wayne County. Pictured above are some Richmond High School seniors enjoying their celebration before graduation. These events surround students with support from the community and encourage them to continue achieving in life.

TIER III

Tier III services are intensive, individualized services typically provided in a one-on-one setting to case-managed students with highly specific needs. Some examples of Tier III services which CIS Wayne County provides are:

- Tutoring
- Assistance with college applications, FAFSA, and other documents related to college preparation
- Goal setting for academics, attendance, and behavior
- Mentors
- Home Visits/Family Engagement
- Incentives
- Career Planning



“Freddy was a new student to Crestdale and since day one, staff at Crestdale noticed Freddy was hungry. He was always asking for seconds at breakfast and lunch. The teacher asked if I would be willing to talk with him and try to find out what was going on. The next day I asked Freddy if he would like to have lunch with me. We sat down in my office while he ate his lunch, and I noticed he ate everything on his tray. We started to talk about how things were going at Crestdale and at his new house. Freddy revealed to me that he’s hungry because there is not any food at home.

Mom and Dad hadn’t got paid in a few weeks so food was low right now. I immediately set Freddy up on the Gleaners BackSack program to receive food bags every Friday after school. I also had a supply of different snacks and drinks that I sent home with him. Freddy was so thrilled to receive the extra food and he was smiling from ear to ear. Because of the trust and connection between the teacher and me, I was able to build a trusting relationship with Freddy and get to the bottom of his needs. Freddy and I now eat lunch together once a week. I check up on him and see how things are going at school and home and make sure Freddy is on the right track. When teachers and CIS work together we can make a difference in children’s lives!”

-Jenny Carr,
Crestdale Elementary School Site Coordinator



Site coordinator Trisha Elsrod spends one-on-one time with a Rose Hamilton student. Tier III services provide students with opportunities to connect individually with a caring adult. Individual meetings allow students a chance to communicate openly and honestly with site coordinators who are equipped with the necessary resources to make a positive difference in their lives.



FINANCIAL REPORT

INCOME	
CIS National	\$40,910.00
State	\$8,560.35
City/County	\$35,833.33
Higher Education	\$2,000.00
School Districts	\$198,737.00
Corporate	\$37,800.00
Foundations	\$61,249.94
Individual	\$30,485.81
Events	\$3,760.00
Non Profits	\$49,050.15
Interest	\$203.89
Inkind	\$3,022.00
Total Income	\$471,612.47

EXPENSE	
Audit	\$-
Board Development	\$450.00
Consulting	\$1,113.75
Equipment	\$2,937.95
Equip Maintenance	\$778.16
Fundraising	\$5,186.00
Insurance	\$1,109.00
Internet Access	\$1,125.36
Local Meetings	\$398.45
Marketing	\$2,243.35
Membership	\$215.67
Payroll Expenses	\$381,433.43
Postage	\$740.47
Rent	\$6,000.00
Supplies	\$4,446.52
Telephone	\$1,460.00
Training	\$2,570.23
Program Services	\$-
Travel	\$2,988.08
Service Charge	\$498.48
Total Expense	\$415,694.90

Net Income **\$55,917.57**

2015 CHAMPION OF EDUCATION AWARDS

The Champion of Education awards are given to recognize individuals and organizations that have been influential in building partnerships between the community and schools in Wayne County, helping young people develop a commitment to life-long learning.



Community Organization
IU Center for Service Learning
 Sponsor – Belden Americas Division
 Presenter: Vivian Ashmawi



Volunteer
Jackie Vanderpool/Tammy Rhoades
 Sponsor – Reid Health
 Presenter: Kiersten Aubre-Howard



Business
Wolverine Worldwide
 Sponsor – Paul & Pat Lingle
 Presenter: Jenny Carr



Educator
Jackie Schlichte
 Sponsor – Stamm Koechlein Family Foundation
 Presenter: Kierstan Barbre



Parent
Lori Lambright
 Sponsor – First Bank Richmond
 Presenter: Amy Sheard



Student
Scout Wampler
 Sponsor – Wolverine Worldwide
 Presenter: Sheriff Jeff Cappa



Unsung Hero
Kiersten Aubre-Howard
 Sponsor – West End Bank
 Presenter: Becky Murray



Star of Success
Tori Taylor
 Sponsor – Richmond Casting Company
 Presenter: Mayor Dave Snow

PARTNERS

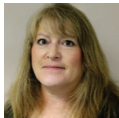
- All Pest Exterminators
- AT&T
- Backpack Blessings
- Bed-in-Bag
- Birthright
- Boys and Girls Club
- Boy Scouts of America
- BSN Sports
- Camp Yale
- Catholic Ministries Furniture Asst.
- Centerstone
- Centerville Christian Church
- Centerville Home Ec Club
- Centerville UMC
- Circle U Help Center
- Community Action of East Central IN
- Crosspoint Church
- Department of Family and Children
- Dollar General-Centerville
- Dot Foods
- Dr. Burkhardt
- Dr. Jerry Logan
- Earlham College
- Earlywine Pest Control
- First Christian Church
- Fountain City Wesleyan Church
- Gateway Church of Richmond
- Genesis
- Girls Inc.
- Gleaners
- Hills Pet Nutrition
- Independent Living Center
- Indiana Business-Professional Women
- Indiana University East
- Ivy Tech Community College
- JACY House
- Johnson Chiropractic Office
- Keds Corporation
- KidsFest
- LearnMore Indiana
- Leukemia and Lymphoma Society
- Lions Club - Centerville
- Lions Vision Program
- Logan and Bailey Optometrists
- Mancinos
- Meridian Mental Health Services
- Mobile Dentist
- More Than Words
- NATCO Credit Union
- Natco Empowerment Center
- Northside Church of Christ
- Open Arms Ministry
- Prepared4Life - Lemonade Day
- Purdue WC Extension Office
- RCS Community Resources
- Reid Health
- Restoration Church
- Richmond Alumni Association
- Safety Village of Wayne County
- Salvation Army
- School Smiles
- Second Helpings
- Sight For Students
- Square Donuts
- St. Pauls Lutheran Church
- St. Vincent DePaul
- Steered Straight, Inc.
- Stride Rite - Wolverine
- Tim Hortons
- Tools for Schools
- Twenty-First Century Scholars
- Vocational Rehabilitation
- Wayne Co Sheriff Department
- Wayne Co. College Success Coalition
- Wayne County Foundation
- Wayne Township Trustee
- West End Bank S.B.
- Youth As Resources



CIS Wayne County graciously accepts a check from Reid Health. Reid is a valued supporter of Communities In Schools. Their continued financial generosity and support of youth in Wayne County has impacted the lives of thousands of students.

CISWC STAFF

MAIN OFFICE



Becky Murray
Executive
Director



Jennifer Scantland
Accounting
Administrator

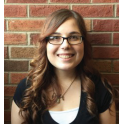


Amy Sheard
Trainer/Supervisor
CISDM Specialist



Matt Railsback
Administrative Assistant
Communications
Coordinator

CENTERVILLE - ABINGTON SCHOOLS



Misty Stroh
Centerville-Abington
Elementary School



Trisha Elserod
Rose Hamilton
Elementary School

RICHMOND ELEMENTARY SCHOOLS



Maricela Lindahl
Charles
Elementary School



Jenny Carr
Crestdale
Elementary School



Nicole Hampton
Fairview
Elementary School



Nancy Young
Starr
Elementary School



Tammy Newton
Vaile
Elementary School



Cindy Cook
Westview
Elementary School

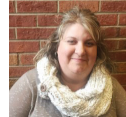
RICHMOND SECONDARY SCHOOLS



Kiersten Aubre-Howard
Richmond
High School



Leigh'Andra Moore
Dennis Intermediate
School



Hope Shipley
Test Intermediate
School

NORTHEASTERN WAYNE SCHOOLS



Melissa Todd
Northeastern
Elementary School



Stephanie Gropp
Northeastern
Jr. High School

NETTLE CREEK SCHOOLS



Allison Ullery
Hagerstown
Elementary School

CISWC BOARD OF DIRECTORS 2015-2016

Mark Soukup- President
Wayne Bank

Dave Bartram
Mainsource Bank

Michael Moore
Centerville-Abington Schools

Todd Terrill
Richmond Community Schools

Josie Seybold- Immediate Past President
Community Corrections

Angie Dickman
Reid Health

Jackie Schlichte
Educational Consultant

Lindsay Truesdell
Wolverine Worldwide

Laura Blessing- Vice President
Northeastern Wayne School Corporation

Al Fullerton
First Bank Richmond

AJ Sickmann
Boston, Bever, Klinge, Cross, & Chidester

Melissa Vance
Wayne County Area Chamber of
Commerce

Pat James- Secretary
State Farm Insurance

Susan Haskett
West End Bank

Phil Stevenson
Centerville-Abington Schools

Rick Wedlow
Richmond Area Career Center

Valerie Ray- Treasurer
Ivy Tech Community College

Terri Lane
Retired Educator

Jim Stapleton
Guidepoint Financial Group



CISWC DONORS 2015-2016

\$5000+ Sponsor

Belden Americas Division
 First Bank Richmond
 Golden Engineering, Inc. – Roger Golden
 Partnership for a Drug Free Wayne County
 Paul & Pat Lingle - Lingle Real Estate
 Quigg Family Foundation
 Reid Health-Community Benefits
 Richmond-Wayne Co. Economic Growth Group
 Stamm Koehlein Foundation
 Town of Hagerstown
 United Way of Whitewater Valley, Inc.
 Wayne County Foundation
 West End Bank
 Wolverine Worldwide

\$3000+ Sponsor

Hoosier Transit, Inc.

\$1000+ Sponsor

Angie Dickman
 B & F Plastics
 Christ Presbyterian Church
 Dot Foods, Inc.
 Ivy Tech Community College
 JM Hutton
 Lions Club of Richmond, Inc.
 Meijer
 Perfect Circle Credit Union
 Purdue University College of Technology
 Richmond Power & Light
 Rod Weiss
 Vigran Family Foundation
 Wayne Bank & Trust Company



\$500+ Sponsor

- Bernadette Williams
- Boyd Lumsden
- Contract Industrial Tooling
- Harrington Hoch
- HYPE Richmond, Inc.
- Jim & Lannie Stapleton
- Jon & Judy Ford
- Kiwanis Club of Richmond
- LPL Financial Foundation – Jim Stapleton
- Marcus & Suzanne Miller
- Mark Soukup

\$250+ Sponsor

- Boys & Girls Clubs of Wayne County
- BSN Sports
- Daryl & Terri Lane
- David Bartram
- Debbie Doggett
- Donna Spears
- Garry & Cheryl Kleer
- InConcert
- Indiana University East
- Jackie Schlichte

- Michael Swain
- Premier Toyota
- Resurrection Lutheran Church
- Richmond Furniture Gallery
- Roma Meyer
- Steven Slonaker
- Tri-County Awards
- VanVleet Insurance
- Vivian Ashmawi
- Wayne County Retired Teachers

- Kiwanis Golden K Club of Richmond
- Kraig & Rachel Rose
- Laura Blessing
- Maynard Fowler
- Natco Credit Union
- Real Estate by Duning
- Schweizer Insurance LLC
- State Farm Insurance
- Valerie Ray

\$100+ Sponsor

- Abstracts of Richmond
- Amy Holthouse
- Ashley McCarty
- Ben & Kristin Austerman
- Boston Bever Klinge Cross & Chidester
- Brad & Beth Hester
- Carol Bucher
- County Tire
- Craig Kinyon
- Dixie Robinson
- Don Kowalke
- Dudley Fetzer
- EDC of Wayne County
- Eric & Melissa Vance
- Frances Yates
- Fullerton Sales & Consulting
- Holland Colours America
- Indiana Farmers Mutual Insurance Company
- INFBPW Knightstown
- Inner Connections Counseling
- Ivy Tech Community College
- Jamie Clark
- Jason & Heather Troutwine
- Jeff & Melissa Baxter
- John & Lisa Hartman
- Kim & Robert Baughman
- Kyle Ross
- Kyle Tom
- Lynn Mayer
- Marci Lindahl
- Michael Moore
- Michelle Walther
- Millicent Emery
- Monica & John Koehlein
- Parker Law, LLC
- Rae Woolpy
- Richmond Association of Realtors
- Robert Ramsey
- Robert Reynolds
- Robin Weinert
- Roger & Anna Golden
- Ronald & Sherri Oler
- Ryan Lathery
- Scott Grimes
- Sharon & Ray Ontko
- Stacey Lewis
- Stephen B. & Pat Heiny
- Susan Haskett
- Vance & Ann England